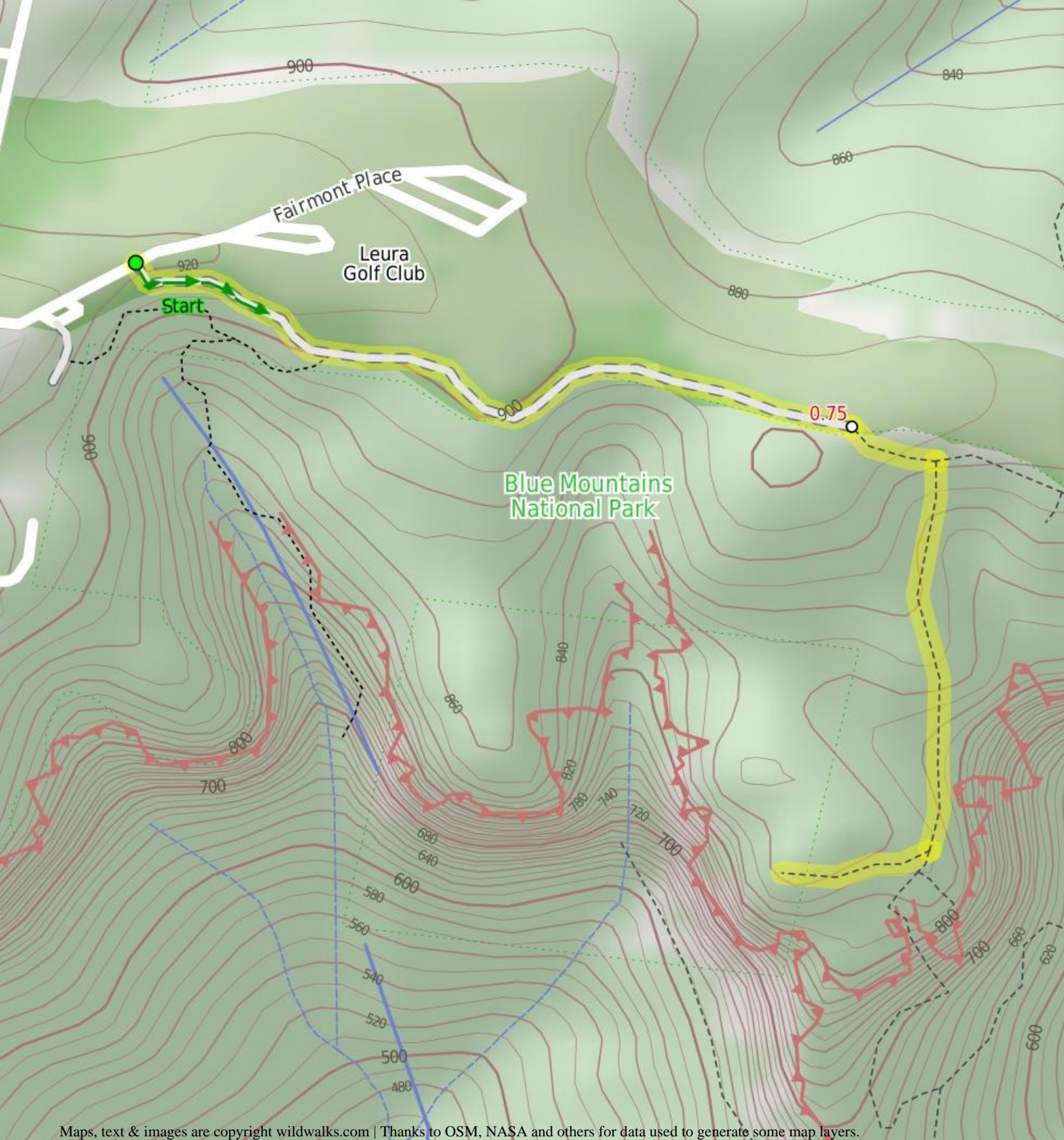


## Leura Golf Course to Gladstone Lookout



**1 hr 30 mins**

**2.9 km Return**

**Moderate track**

**▲ 195m**

3

This walk takes you to the dramatic views of Gladstone Lookout, past the Leura Golf Course. Gladstone Lookout has sweeping views of the many cliffs surrounding the Jamison Valley below, including the Kings Tableland. This is one of the less visited formal lookouts in the area, but still offers great views.

816m

Blue Mountains National Park

### **Are you ready to have fun?**

Please ensure you and your group are well prepared and equipped for all possible hazards and delays. Check park closures, weather information and Fire Danger Rating before setting out. Optional side trips and alternate routes noted are not included in this walks overall grade, length or time estimate. Please allow extra time for resting and exploring areas of interest. The authors, staff and owners of wildwalks take care in preparing this information but will not accept responsibility for any inconvenience, loss or injury you may experience. Please take care, have fun - Happy Walking.

**Getting there** You can get to Int of Grand Cliff Top Walk and Fairmont Place (gps: -33.7218, 150.348) by car or bus. Car: There is free parking available.

This is a return, so you will finish back at the start.

Find up to date and more information including; travel directions, weather, park closures and walker feedback at <http://wild.tl/lgctgl>

### **0 | Int of Grand Cliff Top Walk and Fairmont Place**

*(750 m 16 mins)* From the road into Fairmont Resort on Fairmont Place, this walk heads east along the asphalt road next to the resort. This soon goes off to the right and becomes a management trail. The walk passes a high ropes course (off to the right) and soon narrows to a bush track, passing a green building (off to the right) as the track goes beside the golf course. Soon, the track follows the edge of the golf course, past a sign saying 'Grand Cliff Top Walk', where the track heads into the bushland.

### **0.75 | Leura Golf Course**

*(720 m 21 mins)* Veer right: From the southern edge of Leura Golf Course (at the sign saying 'Grand Cliff Top Track'), this walk heads west, into the bushland along the flat track, until coming to an intersection with another bush track, signposted as the way to 'Gladstone Lookout' or 'Moya Point'.

Turn right: From the intersection, this walk follows the 'Inspiration Point' signs to the south, down the stairs. Once the track flattens out, it continues south until coming to an intersection, signposted as the way to 'Moya Point' or 'Gladstone Lookout'.

Veer right: From the intersection, this walk goes up the steps, following the 'Gladstone Lookout' sign. Once the track flattens out, the trees come closer to the track, forming a passageway. This continues until, quite suddenly, the track breaks out onto Gladstone Lookout. This offers great views of Leura and the Jamison Valley. It is also possible to look south-east over to Kings Tableland.

