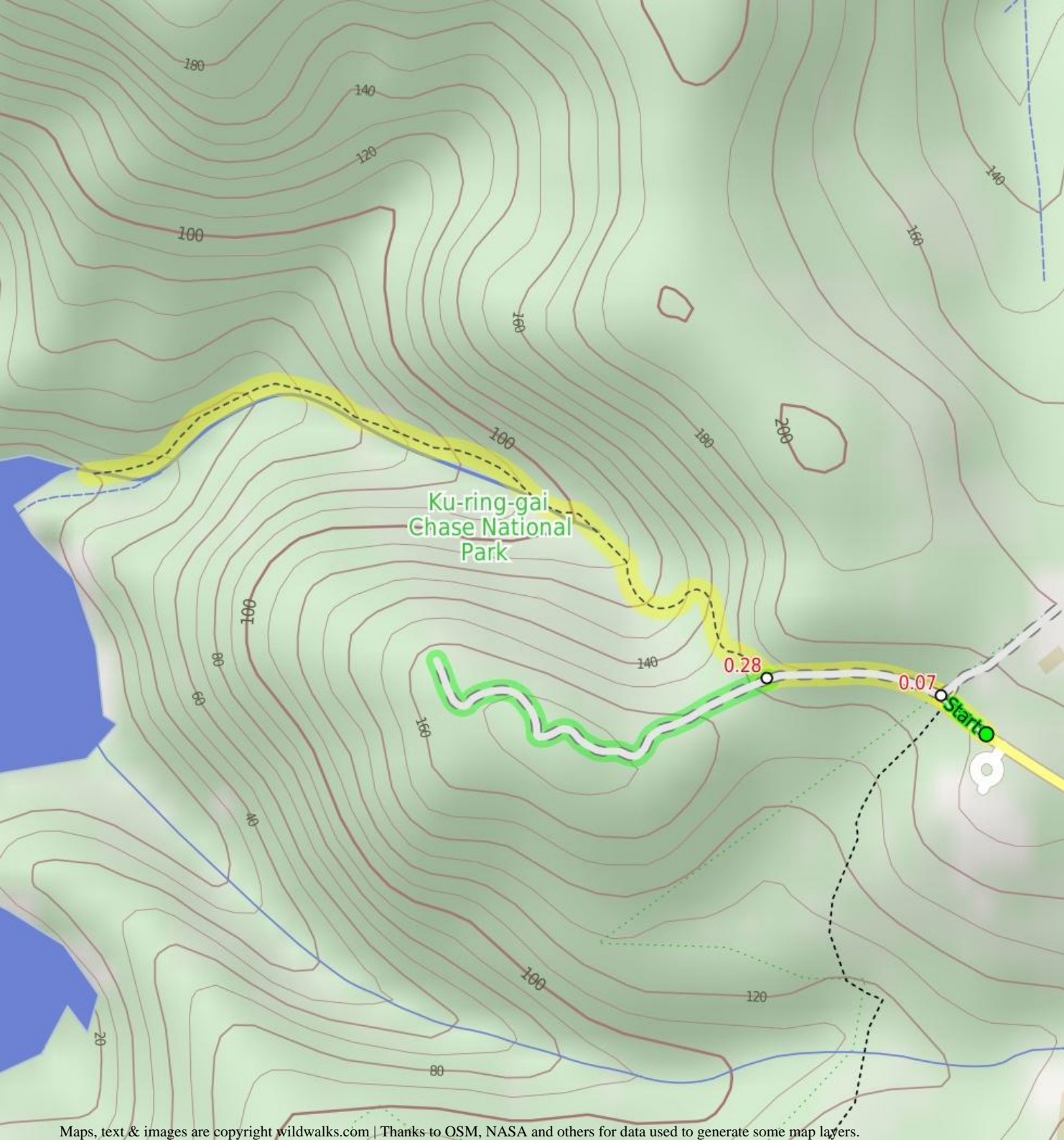


Duffy's Track and Slade Lookout



1 hr 30 mins

Moderate track

2.5 km Return

↑ 214m

3

A less frequented track, this rough, steep bush track abounds with wildlife including goannas and black snakes. Slade Lookout is definitely worth the short trip along the management trail to see good views over the marina at Bobbin Head. The mangroves at Duffy's Wharf (Cowan Creek) are also teeming with wildlife.

17m

Ku-ring-gai Chase National Park

Are you ready to have fun?

Please ensure you and your group are well prepared and equipped for all possible hazards and delays. Check park closures, weather information and Fire Danger Rating before setting out. Optional side trips and alternate routes noted are not included in this walk overall grade, length or time estimate. Please allow extra time for resting and exploring areas of interest. The authors, staff and owners of wildwalks take care in preparing this information but will not accept responsibility for any inconvenience, loss or injury you may experience. Please take care, have fun - Happy Walking.

Getting there Traveling by car is the only practical way to get to End of Booralie Rd (gps: -33.6689, 151.1817). Car: There is free parking available.

This is a return, so you will finish back at the start.

Find up to date and more information including; travel directions, weather, park closures and walker feedback at <http://wild.tl/dtasl>

0 | End of Booralie Rd

(70 m 1 mins) From the end of Booralie Rd, this walk bypasses the gate, signposted as the 'Booralie Namba Trail' and heads north-west along the management trail for approximately 100m before coming to an intersection with several other management trails.

0.07 | Int of Booralie & Cullamine Track

(210 m 4 mins) Continue straight: From the intersection, this walk passes the gate signposted as the 'Booralie Trail' and heads north-west along the management trail. the walk soon comes to an intersection with another management trail signposted with 'Slade Trail' and 'Duffys Wharf'

0.28 | Optional sidetrip to Slade Lookout

(500 m 11 mins) Continue straight: From the intersection, this walk heads south-west along the flat management trail for approximately 500m before coming to Slades Lookout, which offers views over Cowan Creek as far as Bobbin Head Reserve. At the end of this side trip, retrace your steps back to the main walk then Turn left .

0.28 | Int of Slade and Duffys Wharf Track

(990 m 26 mins) Turn right: From the intersection, this walk follows the management trail to the north-west, following the 'Duffys Wharf' sign. The management trail soon begins to descend steeply before becoming a rough track. The track continues to go down steeply, following a small creek to the edge of Cowan Creek. (This is a very enjoyable walk however the track is in disrepair and there are frequent obstacles along the track, including fallen logs and overhanging branches.)

