



Carrington Park to Marguerite Cascades



1 hr 15 mins

Hard track

4

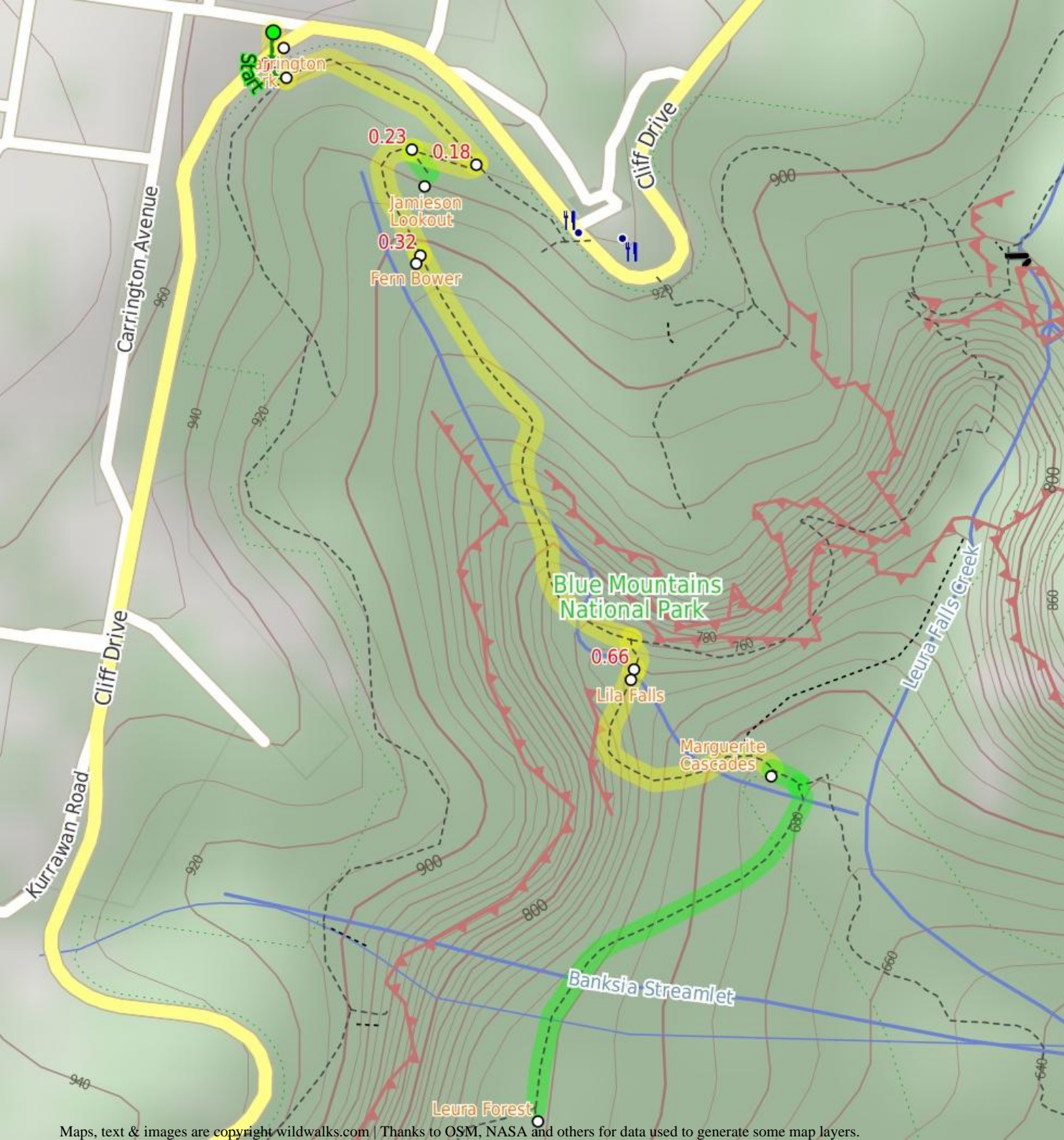
1.7 km Return

368m

This walk explores the eastern end of Federal Pass track. Starting near Carrington Park, on Cliff Drive, the walk descends steeply, passing the Jamieson Lookout, Fern Bower and Lila and Linda falls. A couple more stair cases and the track comes to Marguerite Cascades. A side trip down to Laura Forest is also described, this is a nice spot to rest.

685m

Blue Mountains National Park



Are you ready to have fun?

Please ensure you and your group are well prepared and equipped for all possible hazards and delays. Check park closures, weather information and Fire Danger Rating before setting out. Optional side trips and alternate routes noted are not included in this walks overall grade, length or time estimate. Please allow extra time for resting and exploring areas of interest. The authors, staff and owners of wildwalks take care in preparing this information but will not accept responsibility for any inconvenience, loss or injury you may experience. Please take care, have fun - Happy Walking.

Getting there You can get to Carrington Park (gps: -33.7202, 150.3174) by car or bus. Car: There is free parking available.

This is a return, so you will finish back at the start.

Find up to date and more information including; travel directions, weather, park closures and walker feedback at <http://wild.tl/cptmc>

0 | Carrington Park

Carrington Park is a medium-sized park on a traffic island, at the junction of Cliff Road and Merriwa St, Katoomba. The park is partially fenced and has a picnic shelter, picnic tables, garbage bins and children's play equipment.

0 | Carrington Park

(40 m 1 mins) From Carrington Park, the walk crosses Cliff Drive and goes down the stairs and past the sign for 'Blue Mountains National Park'. The walk continues down the stairs until reaching an intersection signposted with the way to 'Echo Point' or 'Leura Cascades'.

0.04 | Int of Prince Henry Cliff Walk and Carrington Park

(150 m 3 mins) Turn left: From the intersection, this walk follows the 'Leura Cascades 1km' sign down the wooden steps and along the bush track, winding through the forest until coming to the signposted intersection of the 'Leura Forest' Track.

0.18 | Int of Prince Henry Cliff Walk and Leura Forest Tr

(40 m 1 mins) Turn right: From the intersection, this walk follows the 'Leura Forest' sign along the bush track, winding down the hill for a short while before dropping down a set of wooden steps, to the signposted intersection with the 'Jamieson Lookout' track.

0.23 | Optional sidetrip to Jamieson Lookout

(20 m 1 mins) Turn sharp left: From the intersection, this walk follows the 'Jamieson Lookout' sign along the short bush track to the rock shelf at the Jamieson Lookout. At the end of this side trip, retrace your steps back to the main walk then Veer left.

0.23 | Jamieson Lookout

Jamieson Lookout is a fenced lookout at the east end of the Federal Pass track, and just off Prince Henry Cliff Walk. The lookout has a bench seat and provides great views up the Jamison Valley, along Kings Tableland escarpment and past Mount Solitary. The lookout is perched up on a large rock buttress, giving views unobscured by trees.

0.23 | Int of Federal Pass and Jamieson Lookout Tracks

(90 m 3 mins) Continue straight: From the intersection, this walk follows the dirt path, heading down the long set of wooden and rocky steps. The walk winds down past a picnic chair under a cliff overhang, and continues down the steps into the valley and through the forest to the Fern Bower information sign.

0.32 | Fern Bower

Fern Bower is an especially pleasant part of the Blue Mountains National Park, protected from heat and providing a great environment for fern trees, bracken ferns and moss to thrive. Fern Bower is a signposted area along the Federal Pass walking track, just below Jamieson Lookout and next to Linda Creek. This is a nice place to stop, rest and enjoy the bird noises.

0.32 | Fern Bower

(340 m 14 mins) Continue straight: From the information sign, the walk follows the track down the steps, passing a 'Rich History' information sign before coming down to the signposted intersection with the Amphitheatre track, at the top of a metal staircase.

Turn right: From the intersection, this walk follows the 'Federal Pass Leura Forest' sign down the long metal staircase, to cross the bridge over Linda Creek in front of Lila Falls.

0.66 | Lila Falls

Lila Falls is a thin waterfall on Linda Creek. The Federal Pass crosses the creek (on a bridge) in front of these falls, just below the intersection with the amphitheatre. The waterfall is not the most spectacular one in this valley, but it is a nice cool spot to catch your breath.

0.66 | Lila Falls crossing

(180 m 11 mins) Continue straight: From the Lila Falls, this walk follows the track heading down the hill, winding down a wooden walkway keeping the creek to the left. The track hugs the rock wall and passes under a shallow overhang. The walk continues down a staircase, then turns back down into the gully where it come to the taller and slender Linda Falls. After passing Linda Falls the walk follows the wooden steps down through the gully, crossing the creek again before heading down to the Marguerite Cascades.

0.84 | Marguerite Cascades

Marguerite Cascades are a series of small cascades finishing with a taller waterfall of a few metres height, dropping into a shallow sandy pool. The cascades are on Linda Creek and a small bridge crosses the creek at the base of the falls as part of the Federal Pass walking track. The cascades are a nice place to sit and listen to the water running and the local birds in this cool shady area.

0.84 | Optional sidetrip to Leura Forest

(320 m 11 mins) Continue straight: From the 'Marguerite Cascades', this walk follows the timber steps downhill, winding steeply for a short while until coming to an intersection with a faint

track, marked with a timber 'Federal Pass' sign, just beside a foot bridge.

Veer right: From the intersection, this walk crosses Linda Creek just below a pleasant cascade using the foot bridge with a handrail. This walk then continues along the bush track that winds along the valley floor, to the signposted 'Leura Forest'. From here, the walk continues along the wide bush track, passing a few picnic tables, and winding through the forest to an open area with a large gazebo and an information sign at the intersection of the Federal Pass and the Dardenelles tracks. At the end of this side trip, retrace your steps back to the main walk then Turn right.

0.84 | Leura Forest

Leura Forest is a great picnic area in the Jamison Valley at the junction of the Federal Pass and Dardenelles Tracks. This place was home to a popular tea house (also known as 'Lady Carrington Dining Hall') from the late 1800's. Today walkers can still enjoy the historic rotunda and the foundations of the original tea house. The picnic area provides a great rest spot under the shade of the lilli pilli and coachwood forest.