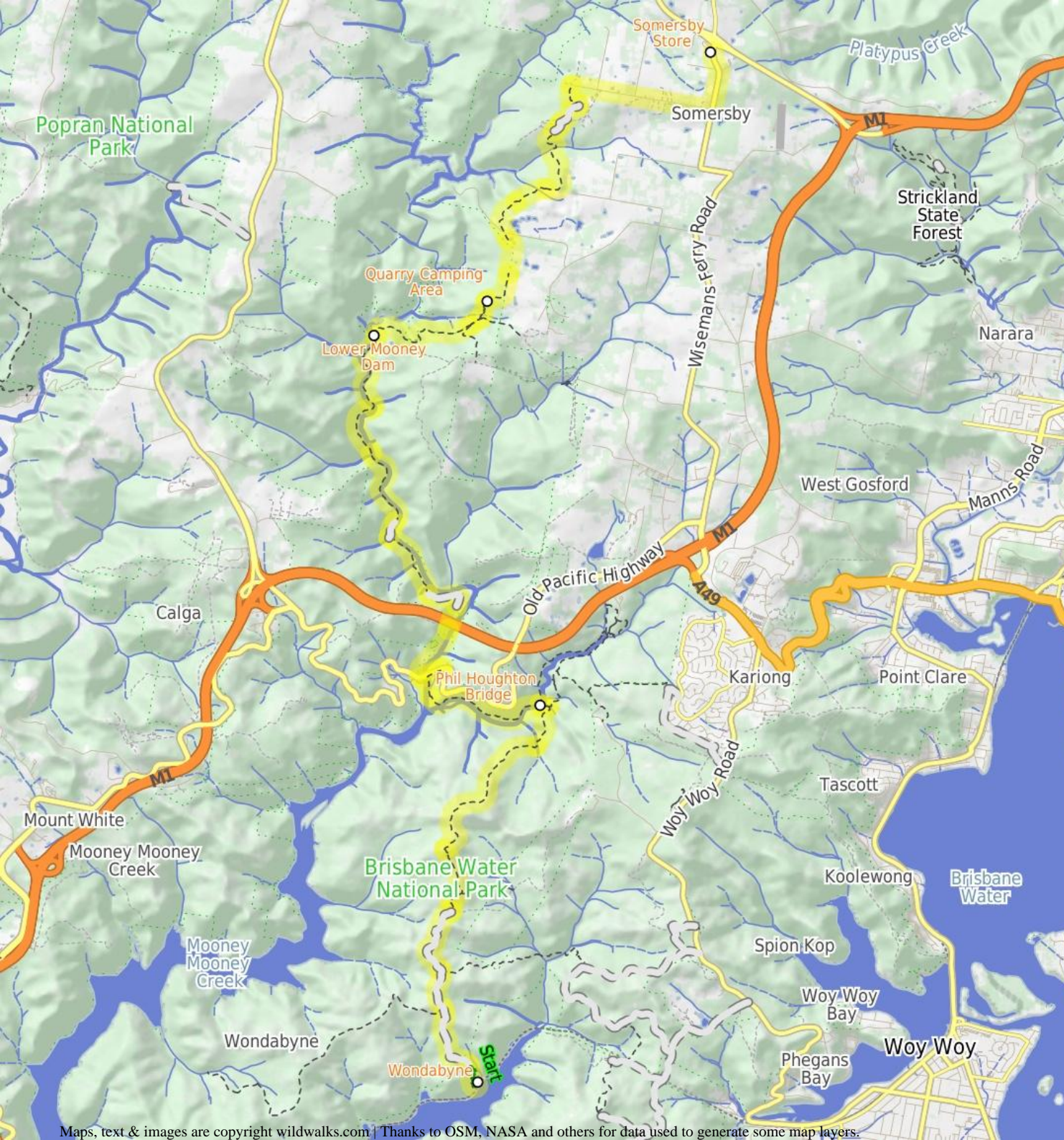




## Wondabyne station to Somersby Store



**10 hrs**

**Hard track**

**26.2 km One way**

**▲ 1164m**

4

This walk, following a section of the Great North Walk, starts from the Wondabyne train station and winds north, into the Brisbane Waters National Park. The walk climbs all the way up to the top of Scopas Peak, and down to the Phill Houghton bridge, then follows the Mooney Mooney Creek north, winding through the bush to the Somersby general store. In Somersby you can use a public phone, enjoy a hot meal and pick up some basic supplies.

298m

2m

Brisbane Water National Park

## Wondabyne

Wondabyne is situated in Brisbane Waters National Park on the banks of Mullet River, which feeds into the Hawkesbury River north of Brooklyn. The area is defined by the National Park's flora and fauna, the quarry, railway station and a few houses sitting above the water around the river. The quarry produced sandstone building materials, used in the construction of the National War Memorial in Canberra. More recently, in 2000, the quarry was re-opened for restoration of St Mary's Cathedral spire in Sydney. Wondabyne Station, named after the nearby Mt Wondabyne, was built in 1889 and exclusively used for the quarry - it was then known as Mullet Creek Station. The station is one of the smallest on the line and one of very few railway stations in a NSW National Park. When you catch the train to Wondabyne, let the guard know you want to get off at Wondabyne Station, otherwise the train will not stop. Travel in the last carriage as the platform is very short. To catch the train from Wondabyne, wave to the driver.

## Phil Houghton Bridge

The Phil Houghton Bridge is a metal suspension bridge that crosses Piles Creek. It is part of the Great North Walk and replaces an older bridge, with part still visible upstream. The bridge can hold up to 8 people and feels very stable. There are great views both up and downstream half way across this bridge. There is a clearing on the northern side that people have used for camping.

## Lower Mooney Dam

Lower Mooney Dam is located on the Mooney Mooney Creek, about 21 km upstream from the Hawkesbury River. In March 1938 the Gosford Mayor turned the tap to add the water from this dam into the small town water supply of the time. It is a concrete arch dam, with a capacity of 1,000 megalitres, and was superseded by the more than 4 times larger 'Upper Mooney Dam' in 1982. There is a set of timber steps and a faint track that leads down to the waters edge on the uphill side of the dam wall, the dam wall is fenced and is clearly out of bounds. A sign reminds visitors that swimming is not allowed.

## Quarry Camping Area

--C AMPSITE CLOSED --This is a small signposted campsite set among the heath, grass trees, scribbly gums and other eucalypts. The clearing is flat and sandy and provides room to set up a few tents with and a small metal fireplace with hot plate. There is no water or other facilities here.

## Before You walk

Bushwalking is fun and a wonderful way to enjoy our natural places. Sometimes things go bad, with a bit of planning you can increase your chance of having an enjoyable and safer walk. Before setting off on your walk check

- 1) Weather Forecast ([BOM Hunter District](#))
- 2) Fire Dangers ([Greater Sydney Region](#))
- 3) Park Alerts ([Brisbane Water National Park](#))
- 4) Research the walk to check your party has the skills, fitness and equipment required
- 5) Agree to stay as a group and not leave anyone to walk solo

## Think before you TREK

The 'Think before you TREK' program developed by NSW Police & NPWS promotes the benefits of planning ahead for your bushwalking trip by using an easy to remember acronym:

- T** Take adequate supplies of food, water, navigation and first aid equipment.
- R** Register your planned route and tell friends and family when you expect to return.
- E** Emergency beacon (PLB's) should be carried on walks with significant gaps in mobile coverage (check terrain profile).
- K** Keep to your planned route and follow the map and walking trails.

## Topo Maps

The maps provided on wildwalks are helpful, but there are times where you may need maps covering a broader area. Maps that cover this walk include;

**1:25 000 Map Series:**91313S GUNDERMAN, 91312S GOSFORD, 91312N WYONG

**1:100 000 Map Series:**9131 GOSFORD

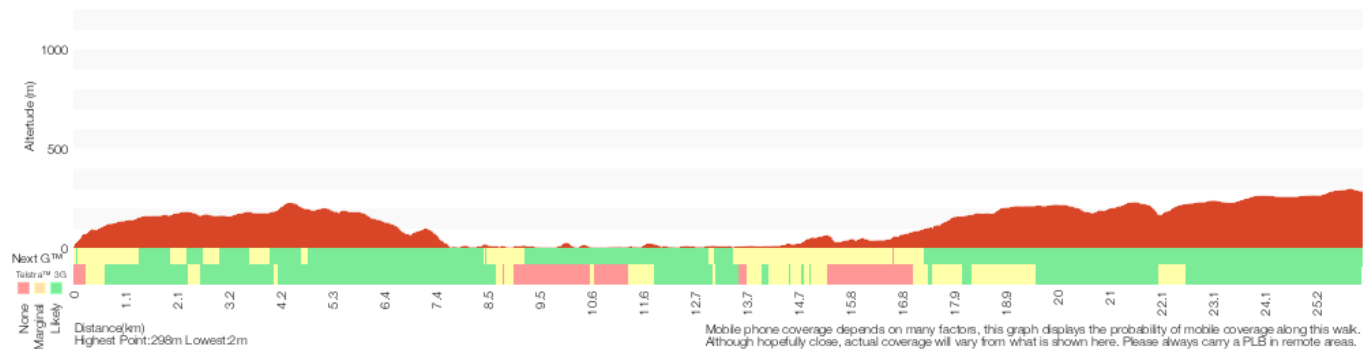
## Grade

This walk has been graded using the AS 2156.1-2001. The overall grade of the walk is determined by the highest classification along the whole track.



Grade 4/6  
Hard track

<b>Length</b>	26.2 km One way
<b>Time</b>	10 hrs
<b>Quality of track</b>	Rough track, where fallen trees and other obstacles are likely (4/6)
<b>Signs</b>	Minimal directional signs (4/6)
<b>Experience Required</b>	Moderate level of bushwalking experience recommended (4/6)
<b>Weather</b>	Storms may impact on navigation and safety (3/6)
<b>Infrastructure</b>	Limited facilities (such as cliffs not fenced, significant creeks not bridged) (4/6)



## Are you ready to have fun?

Please ensure you and your group are well prepared and equipped for all possible hazards and delays. Check park closures, weather information and Fire Danger Rating before setting out. Optional side trips and alternate routes noted are not included in this walk's overall grade, length or time estimate. Please allow extra time for resting and exploring areas of interest. The authors, staff and owners of wildwalks take care in preparing this information but will not accept responsibility for any inconvenience, loss or injury you may experience. Please take care, have fun - Happy Walking.

**Getting there** Traveling by train is the only practical way to get to Wondabyne Station (gps: -33.4921, 151.257). You can get back from Somersby Store (gps: -33.3581, 151.2903) by car or bus. Bus: A bus service runs along Wisemans Ferry Rd passing Somersby store. The service runs between Gosford and Spencer only a few times a day. Please check timetable for more info or Phone Busway on (02) 4368 2277. The bus only picks passengers up to head to Somersby on the afternoon runs. Car: There is free parking available.

Find up to date and more information including; travel directions, weather, park closures and walker feedback at <http://wild.tl/wstss>

### 0 | Wondabyne

Wondabyne is situated in Brisbane Waters National Park on the banks of Mullet River, which feeds into the Hawkesbury River north of Brooklyn. The area is defined by the National Park's flora and fauna, the quarry, railway station and a few houses sitting above the water around the river. The quarry produced sandstone building materials, used in the construction of the National War Memorial in Canberra. More recently, in 2000, the quarry was re-opened for restoration of St Mary's Cathedral spire in Sydney. Wondabyne Station, named after the nearby Mt Wondabyne, was built in 1889 and exclusively used for the quarry - it was then known as Mullet Creek Station. The station is one of the smallest on the line and one of very few railway stations in a NSW National Park. When you catch the train to Wondabyne, let the guard know you want to get off at Wondabyne Station, otherwise the train will not stop. Travel in the last carriage as the platform is very short. To catch the train from Wondabyne, wave to the driver.

### 0 | Wondabyne Station

*(1.5 km 32 mins)* From the north-bound platform of Wondabyne Station, this walk follows the 'The Great North Walk' sign off the southern end of the platform, keeping the train lines (and water) to your left. The track soon leads past a strangler fig and a large boulder then bends right and heads up a timber staircase with a metal landing at the top. The track winds steeply uphill, up a series of timber and rock steps for just over 200m to pass a filtered view of the cranes (right), down at the old Gosford Quarry. Here the walk continues a bit more steeply uphill for another 150m, up a series of rock steps, and then, soon after passing up the carved steps in a cleft in a rock, the track flattens out and comes to a clearing at the end of a management trail, marked with a 'Brisbane Water National Park' sign.

Continue straight: From the clearing, this walk follows the wide management trail uphill past the 'Brisbane Water National Park' sign. The trail leads up quite steeply for about 250m, where the trail bends right then leads gently uphill for about 600m. Here the trail leads up a short but quite steep hill, to then bend left and, about 150m later, come to an intersection with the Pindar Cave track (that leads over a rock platform, on your left), marked with a GNW arrow post (on your right).

### 1.47 | Eastern end of the Pindar Cave Track

*(630 m 11 mins)* Continue straight: From the intersection, this walk follows the GNW arrow post north, gently uphill along the wide trail. The trail gently undulates along the top of the ridge for about 600m to come to an intersection

with the 'Great North Walk' track (on your right), marked with a 'Wondabyne Station' sign pointing back down the hill.

### 2.1 | Int of GNW and Wondabyne trail

*(1.1 km 22 mins)* Continue straight: From the intersection, this walk follows the 'Girrakool' sign uphill along the wide trail. After about 50m, this trail leads up onto a large rock platform. From the top of this platform, there are some distant views over Mooney Mooney Creek. The walk continues on the platform, following the scrape marks on the rock, tending right, to soon find the wide trail again. The trail undulates (moderately steeply in a few places) along the ridge line for about 900m to come to an intersection marked with a 'Girrakool' sign (pointing left), just before a 'No Entry Past This Point' sign.

### 3.23 | South end of Scopas Peak Track

*(1.2 km 23 mins)* Turn left: From the intersection, this walk follows the 'Girrakool' sign and GNW arrow post north along the clear track. After about 150m, the walk comes to a green painted metal box on a post (on your right), containing a Great North Walk intentions book.

Continue straight: From the Great North Walk intentions book, after leaving your comments, this walk heads north, gently up along the clear track. The track gently undulates along this ridge for about 750m, leading across a long sandy saddle to the base of Scopas Peak. Here the walk climbs steeply for about 230m, stopping occasionally to enjoy the view, up the series of rocks with cut steps and past a few rock walls. Near the top of this climb, the track bends left to lead up to a view point just to the west of Scopas Peak.

### 4.39 | Scopas Peak

*(2.4 km 57 mins)* Veer right: From the view point just west of Scopas Peak, this walk heads north-east and gently downhill, initially keeping the distant views to your left. The track leads down, becoming notably steeper for about 300m to then cross over a long rock platform, with a series of GNW arrow posts guiding the way. After this rock platform, the track leads for another 250m, crossing a couple of small rock platforms before leading along a heathy track. About 400m along, the walk passes another view to Mooney Mooney Bridge, then comes to the edge of another large rock platform. A series of GNW arrow posts lead across this rock platform, generally heading away from Scopas Peak for about 400m, where the arrows lead off the rock platform and back onto a heathy track. The rocky track continues down along the ridge for just shy of 300m to come to the edge of another smaller rock platform with more with distant views. From here, the track leads downhill for about 600m, passing a couple of rocky outcrops and becoming progressively steeper until coming to the edge of an intermittent creek, which flows over the solid sandstone platform, at the bottom of the valley.

### 6.81 | Tributary Crossing

*(940 m 30 mins)* Continue straight: From the western bank, this walk crosses the intermittent creek which flows over the solid sandstone platform, to follow the track uphill. The rocky track initially leads gently uphill but soon leads steeply up for about 130m, where the track mostly flattens out to pass a sandstone overhang (on your right). Soon after this overhang, the track leads over a small gully then along the side of a longer rock wall with another tall sandstone overhang. The track continues gently downhill for another 300m, becoming a little steeper along the way, until just past a set of rock steps. Here the track begins to head steeply down the side of the hill for about 130m, first passing through a cleft in the rock then past a few rock walls. Just after a few switchbacks, this walk heads into a narrow gully, past a small 'Patonga' sign, then comes to a three-way intersection beside an intermittent creek, marked with a large 'The Great North Walk' sign with a 'Patonga Ferry' arrow pointing back up the hill.

Continue straight: From the intersection, this walk follows the 'Piles Creek' sign down the track (keeping the valley to the right). The rocky track heads

steeply downhill for about 170m to Piles Creek. Just past the old bridge, this walk climbs up the stairs to cross the Phil Houghton suspension footbridge, enjoying the views of the tidal Piles Creek. On the other side, this walk climbs down the stairs to an intersection beside a large clearing (and campsite, on your left).

### 7.75 | Phil Houghton Bridge

The Phil Houghton Bridge is a metal suspension bridge that crosses Piles Creek. It is part of the Great North Walk and replaces an older bridge, with part still visible upstream. The bridge can hold up to 8 people and feels very stable. There are great views both up and downstream half way across this bridge. There is a clearing on the northern side that people have used for camping.

### 7.75 | Phil Houghton Bridge

*(1.8 km 36 mins)* Turn left: From the intersection on the northern end of the 'Phil Houghton Bridge', this walk follows the 'Mooney Creek' arrow through the large clearing and campsite, keeping Piles Creek to your left. The track leads under a large dead tree then winds past some cliffs and among large boulders for about 1km then crosses a short timber bridge with handrails. Just past this bridge, this walk heads over a short flat timber bridge, then about just shy of 150m later, heads along a section of timber boardwalk. From this tall eucalypt forest, this track contours around the side of the hill for about 500m, alongside Piles Creek, then starts to climb passing among the grass trees before heading down a handful of timber steps and coming to a three-way intersection marked with a 'Brisbane Waters National Park' sign, just before Mooney Mooney Creek.

### 9.54 | Brisbane Water NP sign

*(540 m 11 mins)* Turn right: From the intersection, this walk follows the GNW arrow post directly away from the face of the 'Brisbane Waters National Park' sign along the clear track, keeping Mooney Mooney Creek to your left. After about 100m, this walk crosses a green timber footbridge, then about 200m later comes to a small clearing and intersection just before the road bridge. Here the walk turns right, following the old management trail uphill through the tall forest for about 200m then heading around a locked gate. Just past the gate, this walk turn left and heads up the short steep bank to come to a T-intersection with the old Pacific Hwy, at a large gravel car park marked with 'Mooney Mooney Creek' Trackhead (just east of the Mooney Mooney Creek bridge).

### 10.07 | Mooney Mooney Creek Trackhead

*(1.5 km 27 mins)* Turn left: From the intersection, this walk follows the 'Newcastle' sign along the narrowing gravel verge, keeping the Old Pacific Hwy just to your right. After about 200m, this walk comes to then crosses the concrete road bridge over Mooney Mooney Creek, enjoying the view of the wide creek below. Once on the other side, this walk heads past a detailed 'Risk Warning' sign suggesting you be sensible as you cross the bridge (hope it is not too late) to then come to an intersection with Karool Rd, just on the other side of the highway (on your right).

Turn right: From the intersection, this walk follows the gravel 'Karool Road' gently downhill, keeping Mooney Mooney Creek to your right. This road leads past a few homes for about 600m to then pass a notable houseboat house. About 250m past this house, this walk come to a Y-intersection, marked with a 'The Great North Walk' sign, just before the tall concrete Mooney Mooney Bridge.

Veer left: From the 'Y' intersection, this walk follows the 'The Great North Walk' sign along the upper dirt road to pass under the Mooney Mooney (F3 freeway) Bridge. Just over 250m after passing under the tall bridge, this walk leads up to a large turning area just before the locked gate, marked with a 'Brisbane Water National Park' sign.

### 11.57 | National Park Gate

*(3.1 km 59 mins)* Continue straight: From the end of the dirt road (that branches of Karool Rd, just north of the Mooney Mooney Bridge), this walk heads uphill along the trail and around the locked gate next to the timber 'Brisbane Water National Park' sign. The trail leads uphill for about 200m to where the trail bends left to pass over the crest of the hill (passing a faint track on your left). Here the trail leads down the other side, still keeping Mooney Mooney Creek to your right for another 400m to come to an intersection marked with a GNW arrow post, beside a large grassy clearing (no camping). Veer right: From the intersection just above the clearing, this walk follows the GNW arrow post down along the track, keeping the clearing and campsite to the right. The track soon leads over a small flat timber bridge then over the next 60m, the track heads under the high tension power lines (past the caution sign) and then along a short section of timber boardwalk. About 20m later, this walk veers right at a Y-intersection, then continues along the mostly flat track beside Mooney Mooney Creek for about 300m, to cross a small rocky tidal creek. The track then continues through the tall forest beside Mooney Mooney Creek for about 600m, passing a couple of she-oak stands before the track then bends left and comes to an indistinct intersection beside a timber and metal footbridge.

Continue straight: From the intersection, this walk crosses the timber and metal footbridge over a tidal, unnamed creek to then turn right and follow the track which soon bends left. Keeping Mooney Mooney Creek to the right, this track passes a small cliff and then follows the mostly flat track through the tall forest for about 170m to come to a large clearing with tall blue gums. (This was once a campsite, camping is not safe and not permitted)

Continue straight: From the campsite, this walk follows the clear track north, keeping the wide Mooney Mooney Creek to your right. The clear, wide and mostly flat track leads alongside the creek for about 1.2km to come to the southern bank of Ausburn Creek (about 130m past a rock wall, on your left), a few metres above its confluence with Mooney Mooney Creek

### 14.71 | Ausburn Creek crossing

*(860 m 22 mins)* Continue straight: From the south bank of Ausburn Creek, this walk crosses the narrow rock platform and creek, then follows the track fairly steeply uphill for about 200m. At the top of this climb, the track gently undulates alongside Mooney Mooney Creek for about 700m before heading down to find a large rock platform on the western bank of Mooney Mooney Creek. This large rock platform is a natural ford of the perennial Mooney Mooney Creek and is home to a scattering of small and large waterholes.

### 15.56 | Mooney Mooney Creek crossing

*(1.2 km 28 mins)* Continue straight: From the bank of Mooney Mooney Creek, this walk crosses the wide rock platform and creek to find the track again on the other side. This creek may become impassable after heavy or prolonged rain. Here the walk turns left and follows the rocky track that leads gently up alongside the creek through the pleasant forest. After a little over 1km, the walk comes into view of the tailwater of the dam and then past a fenced cutting (on your right), the site of an old pump house. About 60m past this fenced area, the walk leads up along the now widening track to find the edge of the fenced lower Mooney Mooney Dam wall.

### 16.78 | Lower Mooney Dam

Lower Mooney Dam is located on the Mooney Mooney Creek, about 21 km upstream from the Hawkesbury River. In March 1938 the Gosford Mayor turned the tap to add the water from this dam into the small town water supply of the time. It is a concrete arch dam, with a capacity of 1,000 megalitres, and was superseded by the more than 4 times larger 'Upper Mooney Dam' in 1982. There is a set of timber steps and a faint track that leads down to the waters edge on the uphill side of the dam wall, the dam wall is fenced and is clearly out of bounds. A sign reminds visitors that

swimming is not allowed.

### 16.78 | Lower Mooney Mooney Dam

*(2.2 km 53 mins)* Continue straight: From the lower Mooney Mooney Dam, this walk heads uphill along the old trail, initially keeping the water on your left. The trail leads up, enjoying the occasional glimpse of water (on your left) for about 400m to pass a washed-out section of the old trail. From here, the walk continues up along the trail for about 1.3km, getting steeper as it climbs, and comes to a three-way intersection marked with a 'Mooney Creek' sign pointing back downhill.

Turn left: From the intersection, this walk follows the 'Reserve Road' sign uphill along the old trail, initially keeping the valley to your left. After about 180m, this walk comes to a faint intersection marked with a 'The Great North Walk' sign.

Turn left: From the intersection, this walk follows the 'The Great North Walk' sign downhill along the track for about 50m, to cross a small pleasant gully with an ephemeral creek. After this, the track starts to wind moderately steeply uphill then, soon after flattening out, it comes to a signposted 'Camping Area' with a metal fireplace.

### 18.97 | Quarry Camping Area

--C AMPSITE CLOSED --This is a small signposted campsite set among the heath, grass trees, scribbly gums and other eucalypts. The clearing is flat and sandy and provides room to set up a few tents with and a small metal fireplace with hot plate. There is no water or other facilities here.

### 18.97 | Quarry Camping Area

*(590 m 11 mins)* Continue straight: From in front of the 'camping area', this walk heads gently uphill along the sandy track, initially keeping the camping area to your right. After about 220m of walking through this scribbly gum forest and passing a small informal campsite on the way, this walk comes to the quarry boundary fence and turns left. Following the fence for about 70m, the track leads to a section of timber boardwalk with a view (right) over parts of the quarry. The walk continues along the fence for just over 250m, crossing a small flat timber bridge to come an intersection with a dirt road (just past the locked gate).

### 19.57 | Quarry gate

*(1.7 km 34 mins)* Veer left: From the intersection, this walk follows GNW arrow marker gently downhill along the dirt road. This walk follows the road for about 400m to come to a large clearing with two large water reservoirs tanks. This walk continues past the two reservoirs (and past the treatment plant building, on your left) to come to a 'The Great North Walk' sign just in front of a small brick building.

Continue straight: From the brick building, this walk follows the 'The Great North Walk' sign gently downhill along the gravel trail (away from the water tanks) for a few metres before turning right onto a track, following a GNW arrow post. This track leads through the banksia and she-oak forest for just over 100m to pass a 'The Great North Walk' sign and then cross Reservoir Rd. On the other side of the road, this track continues gently down through the she-oak (*Casuarina glauca*) forest for about 150m before crossing a metal footbridge. On the other side of the bridge, this walk turns left and follows the track as it winds down through the heathy bushland, alive with wildflowers in spring, for about 400m and crosses a small ephemeral creek. The track then leads under a set of high tension power lines and then bends right and leads gently up for another 20m, coming to an intersection with a power line management trail.

Veer right: From the intersection, this walk follows the management trail uphill, keeping the power lines just to your right. After about 40m, this walk follows the GNW arrow post left (ignoring the 'Private Property' trail ahead) as the track winds gently uphill for about 250m before veering left, ignoring

another 'Private Property' track (on your right). The mostly flat track now leads along the side of the hill for about 100m before passing under another set of power lines and leading right, steeply up the short rocky hill. At the top of this hill, the track leads to the end of a trail, but immediately veers right to follow a track along a fence for about 60m before rejoining the same power line management trail.

### 21.28 | South end of Robinson Crk Track

*(1.3 km 31 mins)* Veer right: From the intersection, this walk follows the GNW arrow post uphill along the wide management trail, following the power lines for about 100m before veering left to follow another GNW arrow post along a narrow track. The track leads into the bush among gymea lilies (*Doryanthes excelsa*) and eucalypts for almost 300m, crossing a couple of short flat timber bridges to then head along a few sections of timber board walk through a weedy section of bush. The track then continues gently downhill for another 150m to cross over a trail. Following the GNW arrow post, this track now begins to lead more steeply down for about 250m, passing through another large grove of gymea lilies, a small cave (on your left). The walk continues down the timber then stone steps to head into the dense moist forest and across a flat timber bridge, coming into view of the creek. Here the walk bends right and leads beside the creek for a short time before bending left, following the GNW arrow post across the creek flowing over the mossy rock bed. Just downstream is a small pool and cascade. Here the walk starts to climb up the other side of the valley, soon crossing a small flat timber bridge. The track then winds steeply out of the ferny and densely forested valley, up a series of timber and stone steps for about 130m where another GNW arrow post marks the end of this section of steep climbing. This track now leads gently up among some tall eucalypts and past a large grove of gymea lily for about 230m to come to a T-intersection with a wide management trail.

### 22.55 | North end of Robinson Crk Track

*(540 m 10 mins)* Veer right: From the intersection, this walk follows the GNW arrow post uphill along the wide sandy trail for about 40m to pass a faint trail (on your right). Then about 120m further up the main trail, this walk comes a T-intersection marked with a couple more GNW arrow posts. Turn right: From the intersection, this walk follows the GNW arrow post gently uphill along the sandy trail. The trail soon leaves the wooded forest and after about 120m, this walk veers left at an intersection in a clearing. After another 120m, the walk heads past a large grassy clearing (on your right) with some tall pine trees. The sandy trail continues for another 150m, past a few scribbly gums, and comes to a Y-intersection marked with a 'The Great North Walk' sign (pointing left).

### 23.08 | Int of GNW and Private Property

*(400 m 7 mins)* Veer left: From the intersection, this walk follows the 'The Great North Walk' sign along the track, initially keeping the sandy trail to the right for a short distance. The track soon bends left, then winds over a small rise through the scribbly gum forest for about 400m before heading over a short section of green boardwalk. A short distance later, this walk crosses a green timber footbridge and comes to an intersection at the end of the dirt Robinson Road.

### 23.48 | End of Robinson Road

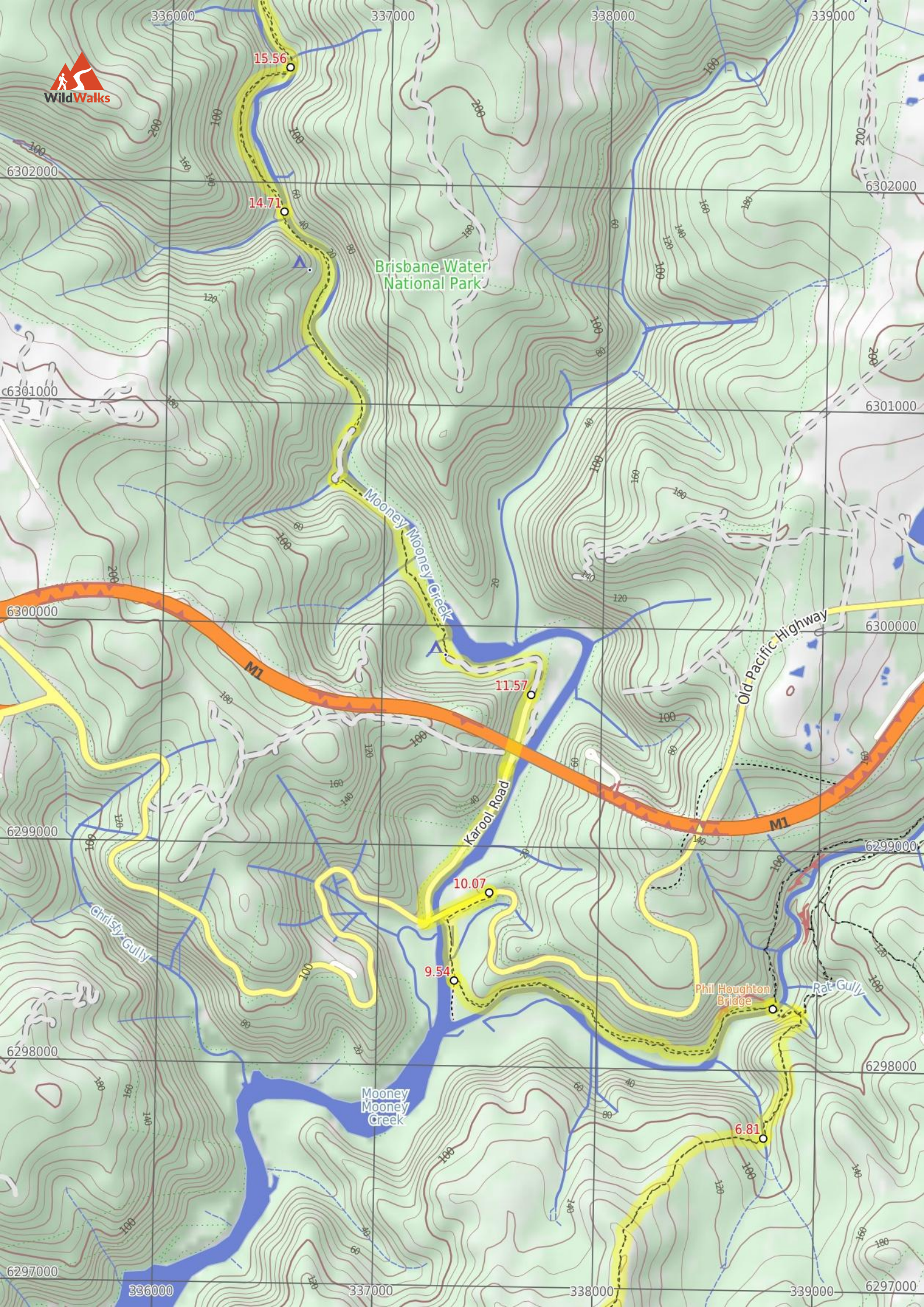
*(2.7 km 50 mins)* Turn right: From the intersection, this walk follows the GNW arrow post uphill along the gravel Robinson Rd for about 300m to then continue straight ahead along the sealed Silvester Rd. This walk heads along the sealed road for another 500m to pass an intersection with 'Anembo Rd', then continues along Silvester Rd. Over the next 1km or so, the walk travels among the rural properties, passing some distant views of the peaks in Brisbane Water NP (to your right), before turning left onto Wisemans Ferry

Road at the T-intersection. From this intersection, this walk leads up along the narrow grassy verge beside the road for about 500m to pass the large communications tower (on your right), heads over the crest of the hill then down for about 250m to come to Somersby Store (on your left).

#### 26.22 | Somersby Store

Somersby Store offers a good place to have lunch or pick up the basic food supplies. The store serves hot food including burgers, chips, pies etc and cold drinks. Opening hours are 6am - 6pm Monday to Friday and 6.30am to 4pm on Saturdays (closed Sundays). There is a pay phone and a bus stop however services are limited to two buses a day. Contact details are (02)4372 1269, at 841 Wisemans Ferry Road Somersby, NSW 2250. The store owners are happy for you to phone ahead. If you are a large group you can order ahead to save the stress. I always encourage people to use local stores like this on track, but since it is a small store it is worth phoning ahead to see what they have what you want in stock.





15.56

14.71

11.57

10.07

9.54

6.81

Brisbane Water National Park

Mooney Mooney Creek

Karool Road

Old Pacific Highway

M1

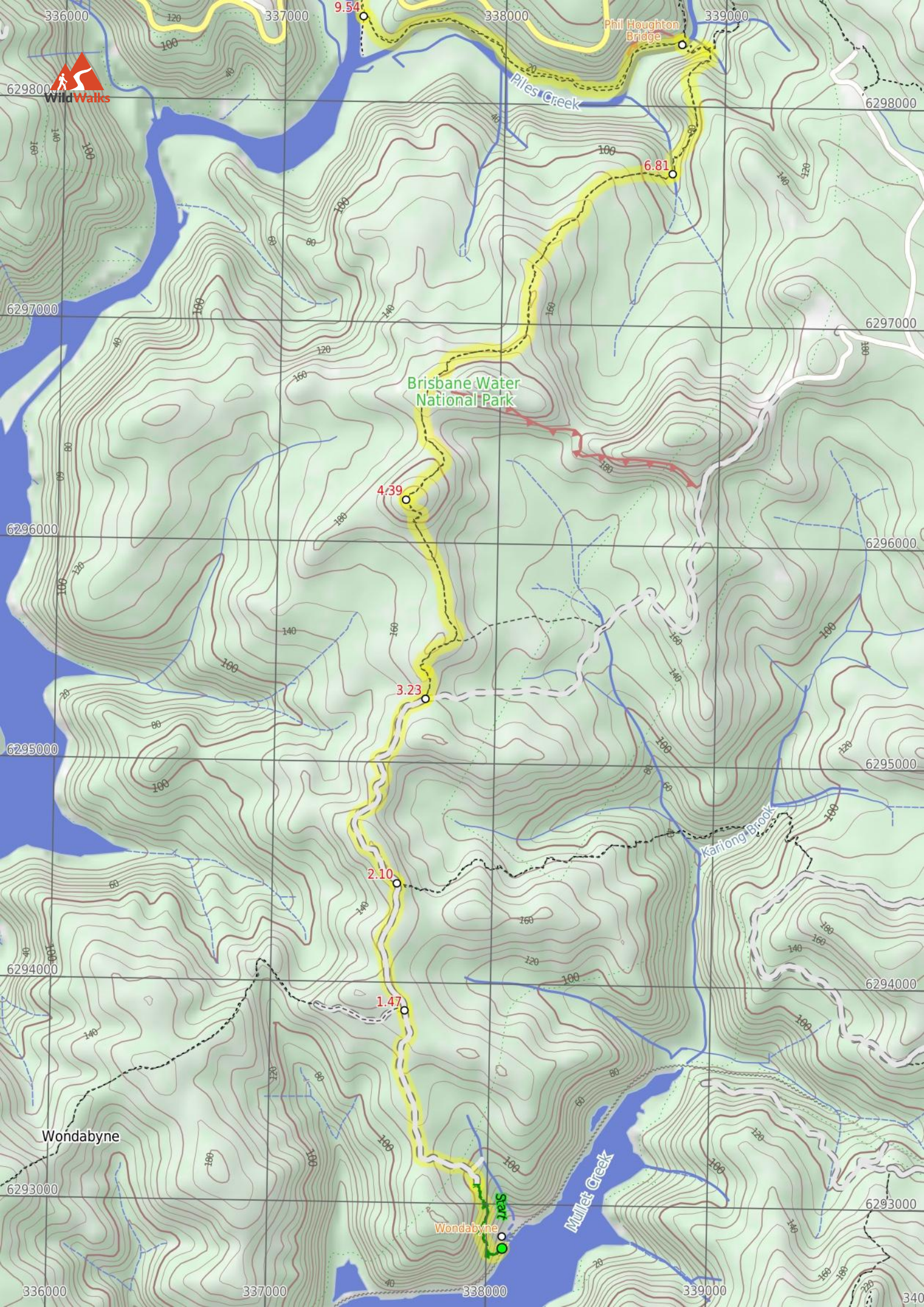
M1

Christy Gully

Rat Gully

Phil Houghton Bridge

Mooney Mooney Creek



Phil Houghton Bridge

Brisbane Water National Park

Piles Creek

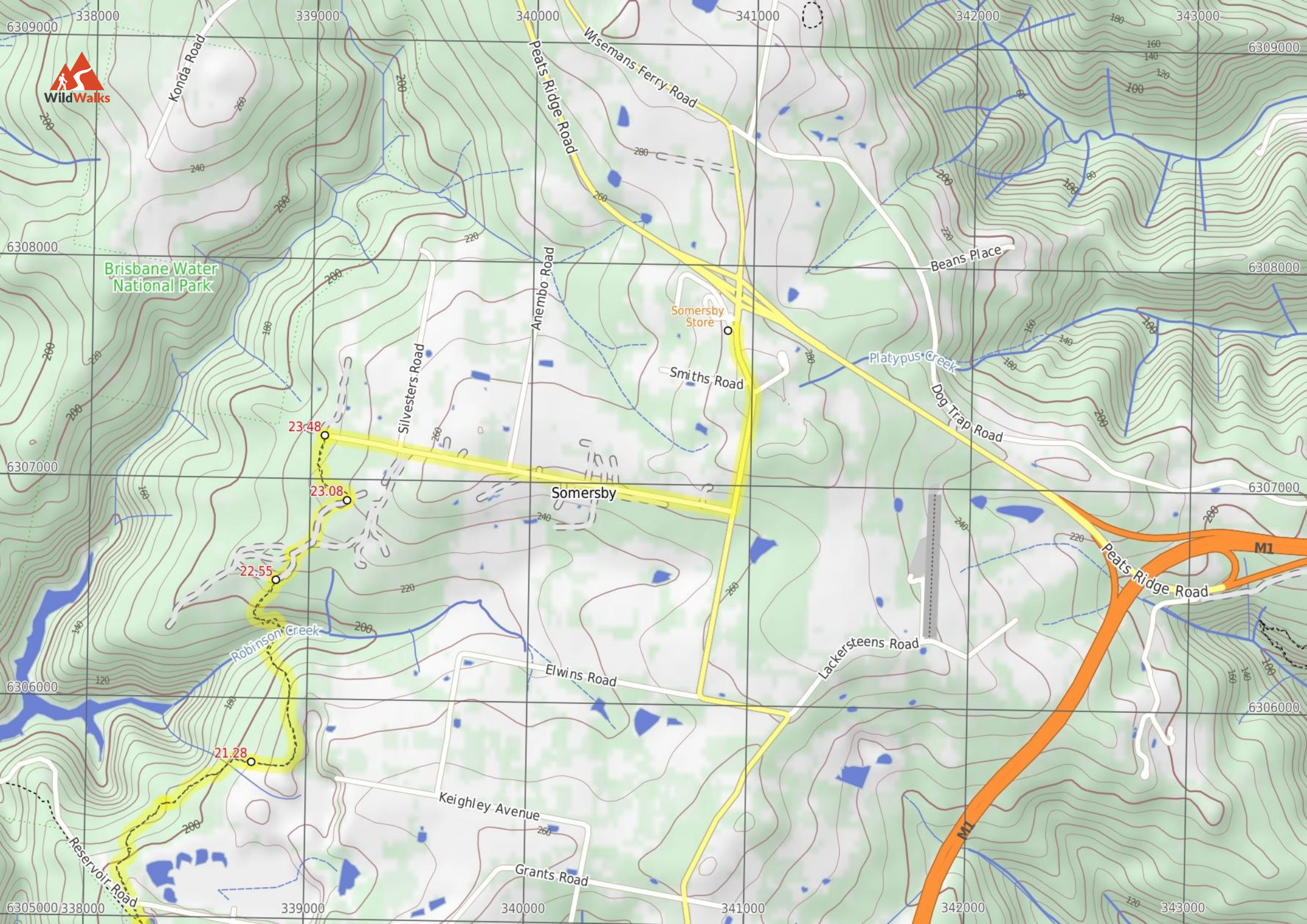
Karlong Brook

Mullet Creek

Wondabyne

Wondabyne

Sat



Brisbane Water National Park

Somersby Store

Somersby

M1

M1

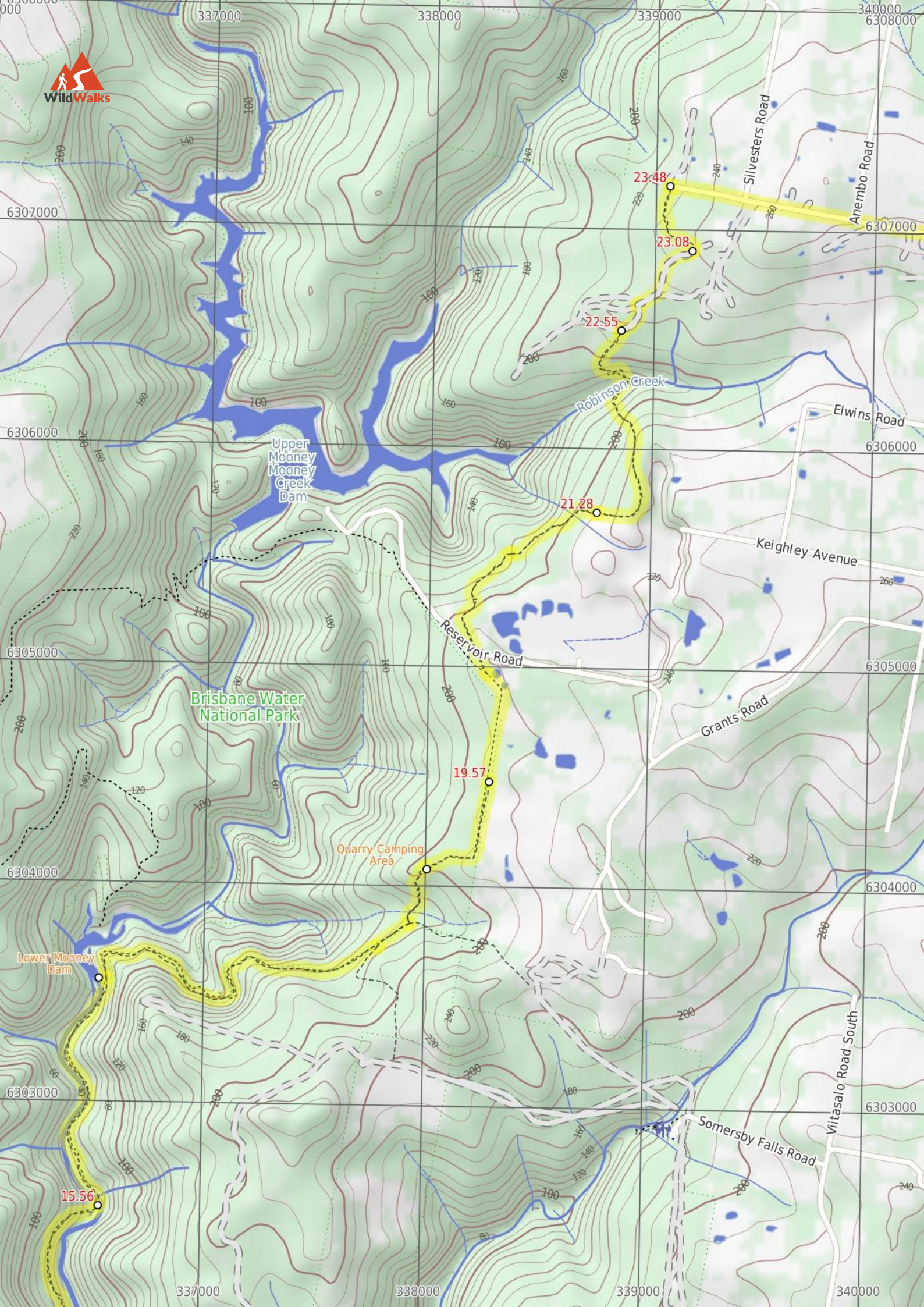
23.48

23.08

22.55

21.28





## Summary navigation sheet for the Wondabyne station to Somersby Store



km	From	Up/Dwn	Length	Initial directions (Use full tracknotes and maps for more detail)
0.00	Wondabyne Station -33.4921,151.257 (GR Gosford, 381928)	172 -18	1.5 km 32 mins	From the north-bound platform of Wondabyne Station, this walk follows the 'The Great North Walk' sign off the southern the end of the platform, keeping the train lines (and water) to your left.
1.47	Eastern end of the Pindar Cave Track -33.4823,151.2522 (GR Gosford, 376939)	19 -5	630 m 11 mins	Continue straight: From the intersection, this walk follows the GNW arrow post north, gently uphill along the wide trail.
2.10	Int of GNW and Wondabyne trail -33.4771,151.2518 (GR Gosford, 376944)	27 -40	1.1 km 22 mins	Continue straight: From the intersection, this walk follows the 'Girrakool' sign uphill along the wide trail.
3.23	South end of Scopas Peak Track -33.4696,151.2532 (GR Gosford, 377953)	80 -14	1.2 km 23 mins	Turn left: From the intersection, this walk follows the 'Girrakool' sign and GNW arrow post north along the clear track.
4.39	Scopas Peak -33.4614,151.2523 (GR Gosford, 376962)	33 -189	2.4 km 57 mins	Veer right: From the view point just west of Scopas Peak, this walk heads north-east and gently downhill, initially keeping the distant views to your left.
6.81	Tributary Crossing -33.4481,151.2653 (GR Gosford, 388977)	65 -129	940 m 30 mins	Continue straight: From the western bank, this walk crosses the intermittent creek which flows over the solid sandstone platform, to follow the track uphill.
7.75	Phil Houghton Bridge -33.4426,151.2657 (GR Gosford, 388983)	62 -66	1.8 km 36 mins	Turn left: From the intersection on the northern end of the 'Phil Houghton Bridge', this walk follows the 'Mooney Creek' arrow through the large clearing and campsite, keeping Piles Creek to your left.
9.54	Brisbane Water NP sign -33.4416,151.2502 (GR Gosford, 373984)	26 -2	540 m 11 mins	Turn right: From the intersection, this walk follows the GNW arrow post directly away from the face of the 'Brisbane Waters National Park' sign along the clear track, keeping Mooney Mooney Creek to your left.
10.07	Mooney Mooney Creek Trackhead -33.438,151.2519 (GR Gosford, 375988)	31 -53	1.5 km 27 mins	Turn left: From the intersection, this walk follows the 'Newcastle' sign along the narrowing gravel verge, keeping the Old Pacific Hwy just to your right.
11.57	National Park Gate -33.4299,151.254 (GR Gosford, 377997)	84 -71	3.1 km 59 mins	Continue straight: From the end of the dirt road (that branches of Karool Rd, just north of the Mooney Mooney Bridge), this walk heads uphill along the trail and around the locked gate next to the timber 'Brisbane W...
14.71	Ausburn Creek crossing -33.4101,151.2419 (GR Gunderman, 365019)	64 -54	860 m 22 mins	Continue straight: From the south bank of Ausburn Creek, this walk crosses the narrow rock platform and creek, then follows the track fairly steeply uphill for about 200m.
15.56	Mooney Mooney Creek crossing -33.4042,151.2422 (GR Gunderman, 365025)	71 -44	1.2 km 28 mins	Continue straight: From the bank of Mooney Mooney Creek, this walk crosses the wide rock platform and creek to find the track again on the other side.
16.78	Lower Mooney Mooney Dam -33.3949,151.2426 (GR Gunderman, 366036)	180 -35	2.2 km 53 mins	Continue straight: From the lower Mooney Mooney Dam, this walk heads uphill along the old trail, initially keeping the water on your left.
18.97	Quarry Camping Area -33.3903,151.2582 (GR Gosford, 380041)	14 -4	590 m 11 mins	Continue straight: From in front of the 'camping area', this walk heads gently uphill along the sandy track, initially keeping the camping area to your right.
19.57	Quarry gate -33.3868,151.2613 (GR Gosford, 383045)	52 -52	1.7 km 34 mins	Veer left: From the intersection, this walk follows GNW arrow marker gently downhill along the dirt road.
21.28	South end of Robinson Crk Track -33.3758,151.2666 (GR Gosford, 388057)	81 -74	1.3 km 31 mins	Veer right: From the intersection, this walk follows the GNW arrow post uphill along the wide management trail, following the power lines for about 100m before veering left to follow another GNW arrow post along a n...
22.55	North end of Robinson Crk Track -33.3683,151.2678 (GR Wyong, 389065)	22 0	540 m 10 mins	Veer right: From the intersection, this walk follows the GNW arrow post uphill along the wide sandy trail for about 40m to pass a faint trail (on your right).
23.08	Int of Great North Walk and Private Property -33.3651,151.2713 (GR Wyong, 392069)	1 -14	400 m 7 mins	Veer left: From the intersection, this walk follows the 'The Great North Walk' sign along the track, initially keeping the sandy trail to the right for a short distance.
23.48	End of Robinson Road -33.3624,151.2702 (GR Wyong, 391072)	80 -21	2.7 km 50 mins	Turn right: From the intersection, this walk follows the GNW arrow post uphill along the gravel Robinson Rd for about 300m to then continue straight ahead along the sealed Silvester Rd. Total walking time for this day will have been about 9 hrs 14 mins, (26.2km).