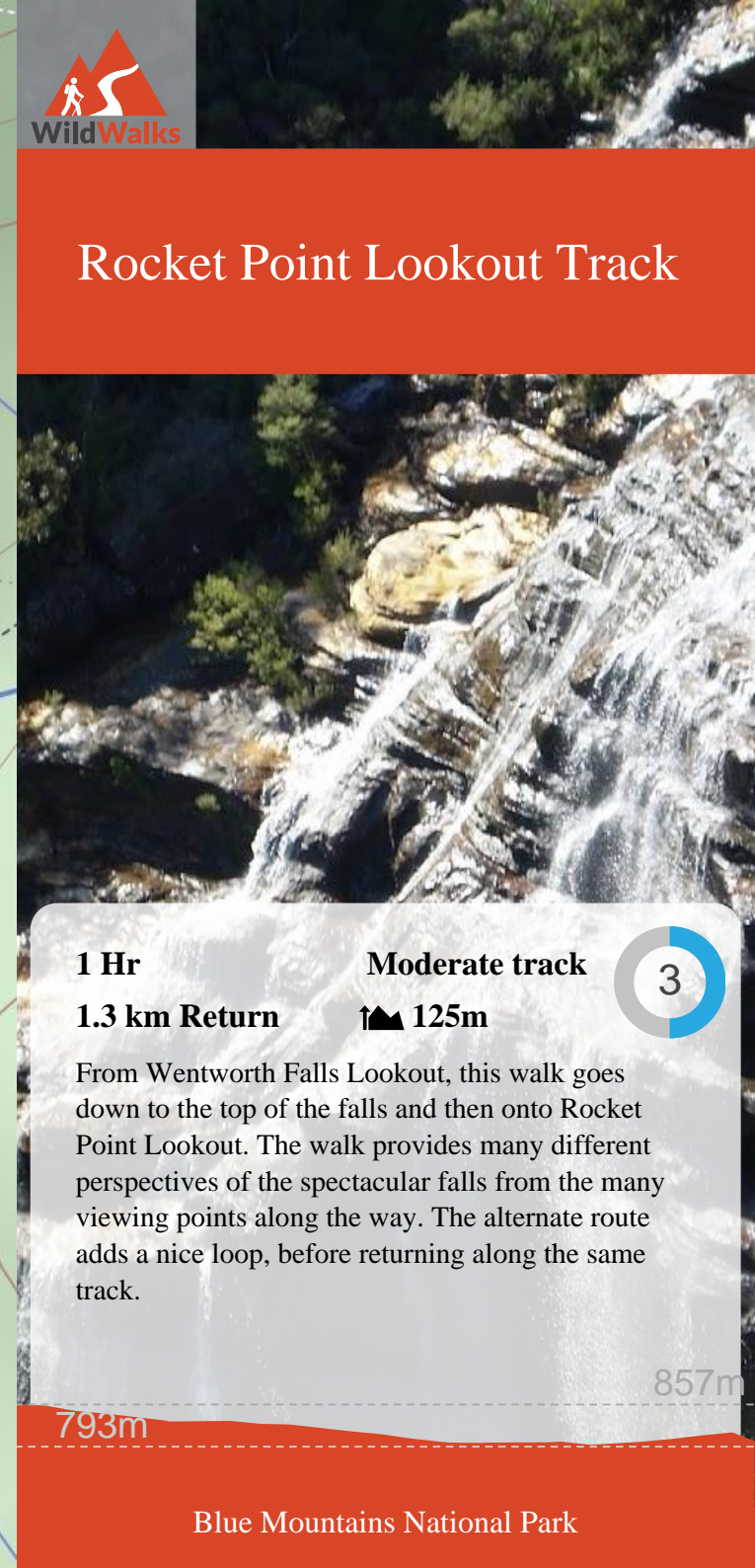
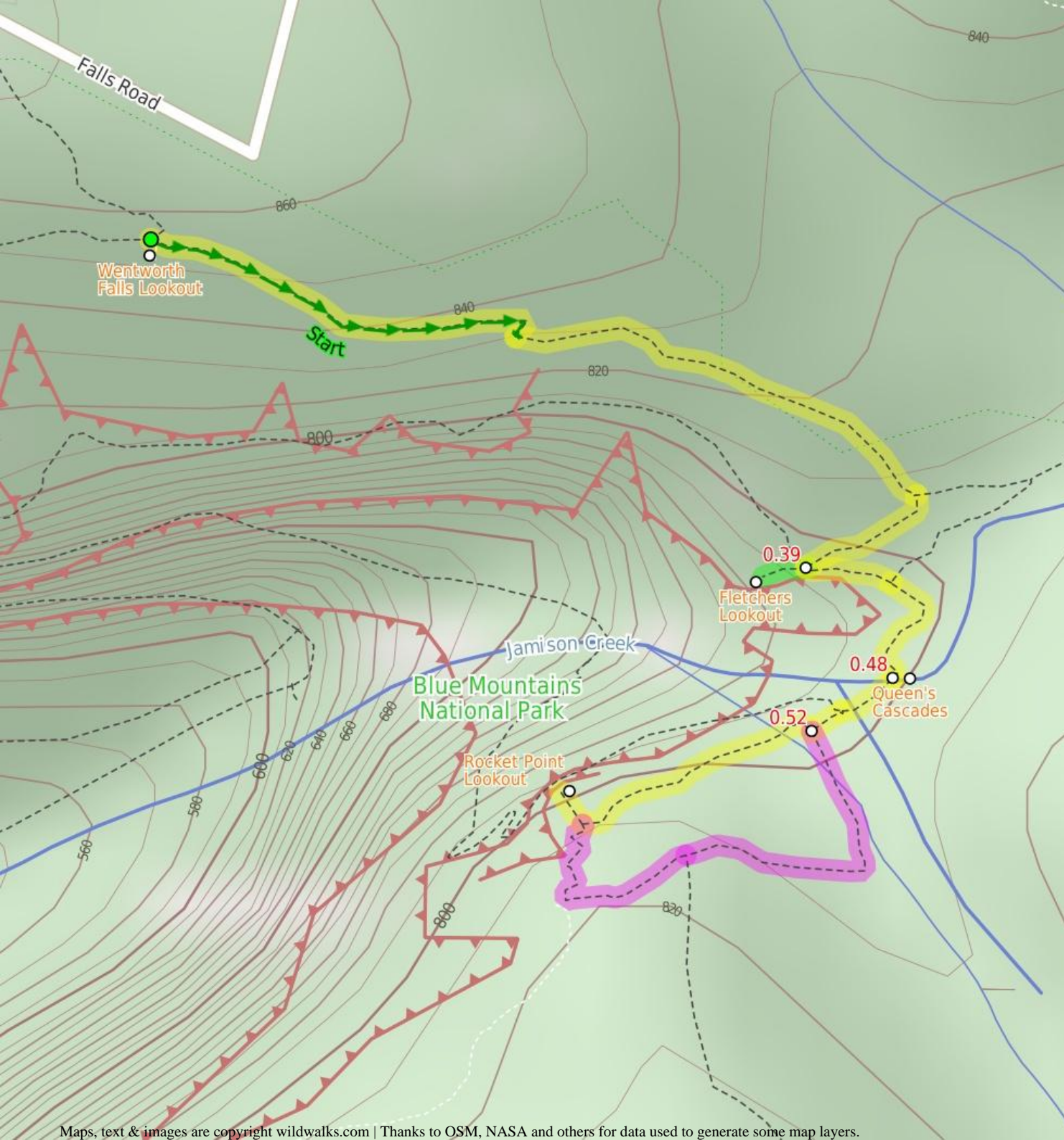


Rocket Point Lookout Track



1 Hr

1.3 km Return

Moderate track

▲ 125m

3

From Wentworth Falls Lookout, this walk goes down to the top of the falls and then onto Rocket Point Lookout. The walk provides many different perspectives of the spectacular falls from the many viewing points along the way. The alternate route adds a nice loop, before returning along the same track.

793m

857m

Blue Mountains National Park

Are you ready to have fun?

Please ensure you and your group are well prepared and equipped for all possible hazards and delays. Check park closures, weather information and Fire Danger Rating before setting out. Optional side trips and alternate routes noted are not included in this walks overall grade, length or time estimate. Please allow extra time for resting and exploring areas of interest. The authors, staff and owners of wildwalks take care in preparing this information but will not accept responsibility for any inconvenience, loss or injury you may experience. Please take care, have fun - Happy Walking.

Getting there You can get to Wentworth Falls Lookout (gps: -33.7259, 150.372) by car or bus. Car: There is free parking available.

This is a return, so you will finish back at the start.

Find up to date and more information including; travel directions, weather, park closures and walker feedback at <http://wild.tl/nwnxx>

0 | Wentworth Falls Lookout

Wentworth Falls Lookout, in the Blue Mountains National Park, is beside Sir H Burrell Drive. The lookout is fenced and has a large information sign about the area. There are some bench seats and great vistas. There is a view to Wentworth Falls (in the valley to the left), but the most captivating view is across the Jamison Valley to Mount Solitary. There are also great views of the Kings Tableland (left), Sublime Point (right) and Narrow Neck (far right) escarpments. This is a great place to enjoy the scope of this World Heritage listed area.

0 | Wentworth Falls Lookout

(390 m 10 mins) From Wentworth Falls Lookout, this walk follows the 'Wentworth Falls Track' - 'To The Falls' sign down the hill (with the view to the right). The walk heads down the log steps, passing several information signs. The track soon heads through a sharp right-hand bend, then comes to an intersection (with a track closed at the time of writing) at the sharp left bend. There is a sign here, pointing back up to 'Wentworth Falls picnic area'.

Turn left: From the intersection, this walk heads downhill following the 'Wentworth Falls - National Pass' sign. The walk gradually descends the well-maintained log stairs, passing some views of the valley on the right. Soon the track comes to an intersection with another sign, pointing back up to 'Wentworth Falls Picnic Area'.

Veer right: From the intersection, this walk follows the 'Wentworth Falls' sign down the track. The track soon steepens, heading down the steps and then coming to a four-way intersection, opposite a short track to 'Fletchers Lookout'.

0.39 | Optional sidetrip to Fletchers Lookout

(20 m 1 mins) Continue straight: From the intersection, this walk

follows the 'Fletcher Lookout' sign down the steps. The fenced and signposted lookout has three main bays, two on the left (with views of Wentworth Falls) and a third down the steps, looking into the valley. At the end of this side trip, retrace your steps back to the main walk then Turn right.

0.39 | Fletchers Lookout

Fletchers Lookout is a fenced and signposted lookout off the side of the Undercliff Walk, just north of the Wentworth Falls. The lookout provides a fairly close view of the top of Wentworth Falls and a great view into the Jamison Valley. There is a good distant view of Mount Solitary and Narrow Neck, and also great views of the surrounding escarpments.

0.39 | Int of Undercliff and Fletchers Lookout Tracks

(90 m 2 mins) Turn left: From the intersection, this walk follows the 'Wentworth Falls' and 'to National Pass' signs down the gentle steps (with the main valley view to the right). The track soon comes to a three-way intersection, with a sign pointing back to 'Undercliff Track'.

Continue straight: From the intersection, this walk follows the 'Wentworth Falls' and 'Wentworth Pass' signs down the steps. The track soon comes to a nice view of Jamison Creek, where it continues to wind down the hill and open up at a fenced rock platform at the top of Wentworth Falls. Here the walk crosses Jamison Creek using the stepping stones, to reveal a lovely waterhole and Queen's Cascades (the creek may be impassable after rain). This is the top of the Wentworth Falls.

0.48 | Queen's Cascades

Queen's Cascades are a lovely set of falls on the Jamison Creek at the top of Wentworth Falls. The creek heads down the wide, two-stage cascades into a sandy pool. From the pool, the water flows between the stepping stones, under the fence and down the very tall Wentworth Falls. There are also great views to Sublime Point across the valley.

0.48 | Top of Wentworth Falls

(40 m 2 mins) Continue straight: From the top of Wentworth Falls, this walk heads away from the falls (keeping the valley view to the right). With the handrail on the right, the track soon crosses a small creek and comes to a three-way intersection and a 'Rocket Point Circuit' sign.

Turn left: From the intersection, this walk follows the 'Rocket Point Circuit' sign upstream, toward the small waterfall for a few meters to turn right and zigzag up the hill for a short distance to soon come to a three-way intersection and a 'Round Walk' sign.

0.52 | Alternate Route Rocket Point Circuit Intersection

(240 m 6 mins) Turn left: From the intersection, this walk follows the 'Round Walk' sign upstream, keeping the creek and small waterfall to the left (and below). The narrow track soon

turns right and, not long after leaving the creek, comes to a three-way intersection with 'Kings Tableland Road' track on the left and a sign pointing back to 'Wentworth Falls'.

Continue straight: From the intersection, this walk follows the 'Rocket Point' sign down the narrow track (with the main valley to the right). Soon the track comes to an unfenced rock platform on a right-hand bend in the track, with great views over the valley (but not of the falls). From the view, the walk follows the stone steps down along the rock face to soon come to an intersection just before the large rock archway at the 'Rocket Point Lookout' sign. Now Continue straight to rejoin the main walk .

0.52 | Rocket Point Circuit Intersection

(120 m 4 mins) Turn right: From the intersection, this walk follows the right arrow on the 'Round Walk' sign, away from the creeks, keeping the valley to the right. The track crosses a small gully then climbs up some stone steps before passing under a rock arch. On the other side of the arch, the walk comes to an intersection, marked with 'Rocket Point Lookout' sign.

Turn right: From the intersection, this walk follows 'Rocket Point Lookout' sign, keeping the rock face to the right. Soon the track leads to the fenced and signposted 'Rocket Point Lookout' and its great views of Wentworth Falls and surrounding valley.

0.64 | Rocket Point Lookout

Rocket Point Lookout is a fenced and signposted lookout, high on the cliff south-west of Wentworth Falls, in the Blue Mountains National Park. The lookout provides a good view down Wentworth Falls and into the valley. There is also a great view of the Sublime Point escarpment. The lookout itself has an interesting sandstone wall and is just down from a natural rock arch.