



This is an interesting walk, starting from Kurnell and following a series of bush tracks and service trails along the coast, with great ocean views. The walk offers some great views of the coast, city, and some great local landscapes, including sand dunes and hanging swamps. The small side trip up to the Cape Bailey lighthouse is well worth it and provides a nice spot for lunch.

Botany Bay National Park

**Length:** 5 km  
**Time:** 1 hr 45 mins  
**Climb:** 101 m  
**Style:** One way  
**Rating:** Track: Hard  
**Where:** 2.2 km ENE of Kurnell  
**Transport:** bus car



Visit [www.wildwalks.com](http://www.wildwalks.com) for more info



*Side trips and Alternate routes mentioned in these notes are not included in the tracks overall rating, distance or time estimate. The notes only describe the side trips and Alternate routes in one direction. Allow extra time for resting and exploring areas of interest. Please ensure you and your group are well prepared and equipped for all possible hazards and delays. The authors, staff and owners of wildwalks take care in preparing these notes but will not accept responsibility for any inconvenience, loss or injury sustained by using these notes or maps. Please take care and share your experience through the website.*

### End of Polo Street to Int of Cape Bailey track and water tank service trail 0.4km 5 mins

(From S) From the end of the Polo St, this walk heads around the metal National Parks gate and south-east along the service trail, with some power lines on the right-hand side. As the track heads further south-east, the track steadily climbs up to the top of a gentle hill and continues along until it comes to the intersection of the Cape Bailey walk and the radar service trail.



### Int of Cape Bailey track and water tank service trail to Tabbigai Gap Track Int 1.7km 25 mins

(From 0.4 km) From the intersection, this walk follows the service trail heading east (with the water tank on the right) for a very short distance until it comes to the intersection with a link bush track on the left.

From the intersection, the track initially heads east, then turns right along the wide bush track, keeping the water tank and the radar on the right as it winds through the heath forest, all the way around until it comes to a four-way intersection with a wide service trail.

From the intersection, the track heads south (with the water tank directly behind) along the sandy bush track, and then along the rock-shelf until coming to an intersection marked by several arrows.

From the intersection, this walk heads south (keeping the ocean to the left, about 150m away) along the rock and the sandy track, through the low dense scrub. Along this part of the track, there are several sections where wind and water erosion has developed small holes along the rock shelf that give it a very interesting look. After some time, this walk passes a small bush track on the left (which heads out to the coast), and shortly after this, comes to an intersection with a service trail at Tabbigai Gap.



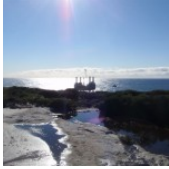
### Tabbigai Gap Track Int to Sand dune int 0.5km 5 mins

(From 2.1 km) From the Tabbigai Gap, this walk follows the clear, sandy track east (with the Tabbigai Gap on the left) up a short hill until it turns right at the small clearing. The track stays away from the ocean and soon comes to a large sand dune clearing. From the other end of the clearing, the walk follows the track south (ocean on the left) through the thick scrub, winding along until it rises up a hill to a long sand dune clearing. From the far end of this clearing, the walk follows the overgrown track through the thick scrub, until it widens out a little and continues south for a short distance, to the intersection in the pit of a sand dune, with a large hanging swamp on the right.



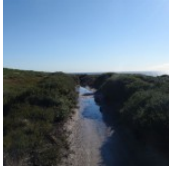
### Hanging Swamps

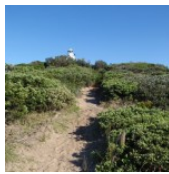
There are a number of hanging swamps that can be found along the Cape Bailey walk. They are home to a number of different plants and animals like reeds and frogs. Hanging swamps are formed on high ground when rainfall seeps out of surrounding hills and accumulates in a slight depression, over time forming a swamp. Interestingly, they are sometimes difficult to see from far away as the thick build up of reeds and other plant life often cover the water.



### Sand dune int to Int of Cape Bailey lighthouse track 1km 15 mins

(From 2.65 km) From the intersection, this walk follows the narrow bush track that heads west to the top of the dunes. (From the top of the dune there are some great views of the hanging swamp straight ahead). The track then turns left and drops off the top of the sand dune, keeping the swamp on the right. The track then climbs a sandy hill to some more views before turning left and heading along a sandy track, through several more large sand dunes. After these dunes, the track starts to flatten out and widen, to head along to an intersection with a bush track (which heads to the lighthouse).

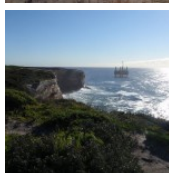




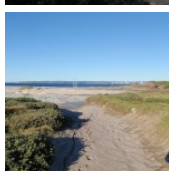
**Int of Cape Bailey Lighthouse track to Cape Bailey Lighthouse 0.1km 2 mins Optional Side Trip:**  
 (From 3.6 km) From the intersection, this walk follows the sandy bush track, heading up and away from the ocean. The track is relatively defined for most of the way, however in the last 20m the track becomes quite overgrown and a little less defined (the lighthouse is always visible). Once at the lighthouse, there are good views inland, however the views to the east are largely blocked by the high scrub.



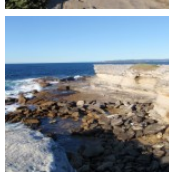
**Cape Baily Lighthouse**  
 Established in 1950, the lighthouse was required so north-bound shipping could hug the coast and avoid the strong southerly currents further out to sea. This lighthouse can be found a stone's-throw from the Cape Baily coastal walk, about 1.5 kilometres north from the Joseph Banks Drive car park. [More info](#)



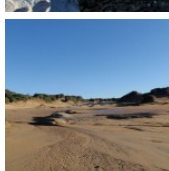
**Int of Cape Bailey lighthouse track to Rock platform 0.7km 15 mins**  
 (From 3.6 km) From the intersection, the track follows the service trail south, along the coast line (keeping the ocean on the left), as it winds down through tall heath to the open rock platform, where where it bends to the right and down the the rocky hill. From here, the track continues west, following the edge of the scrub until it comes to a rock platform where the track starts to head further inland.



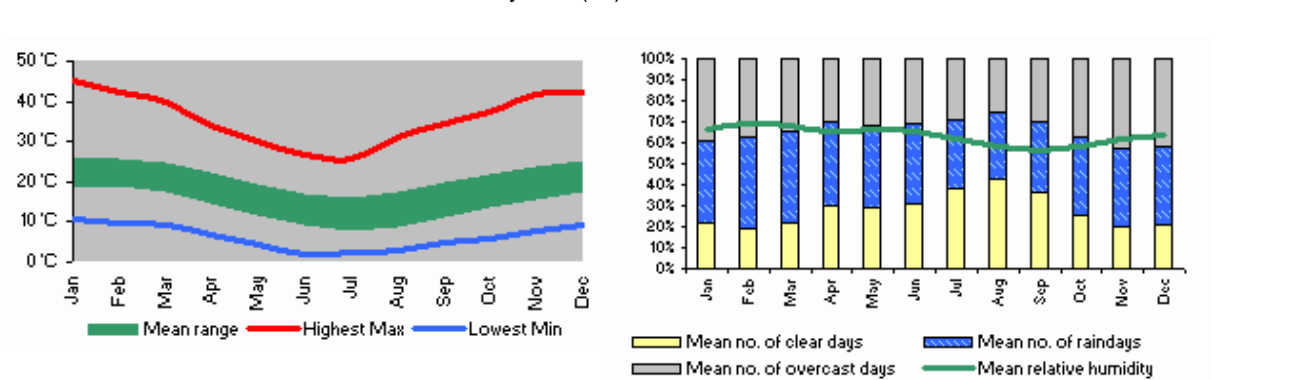
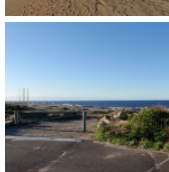
**Rock platform to Sir Joseph Banks Drive Carpark 0.7km 10 mins**  
 (From 4.29 km) From the intersection, this walk follows the management trail as it heads south-west off the rock platform (keeping the ocean on the left) and down the grassy hill, passing a few small tracks, coming to the end of the clear management trail. From here, the walk follows the coast (ocean on the left), cutting across the mouth of the sand dunes and bending around to the right and up the gentle hill to the Sir Joseph Banks Drive car park.

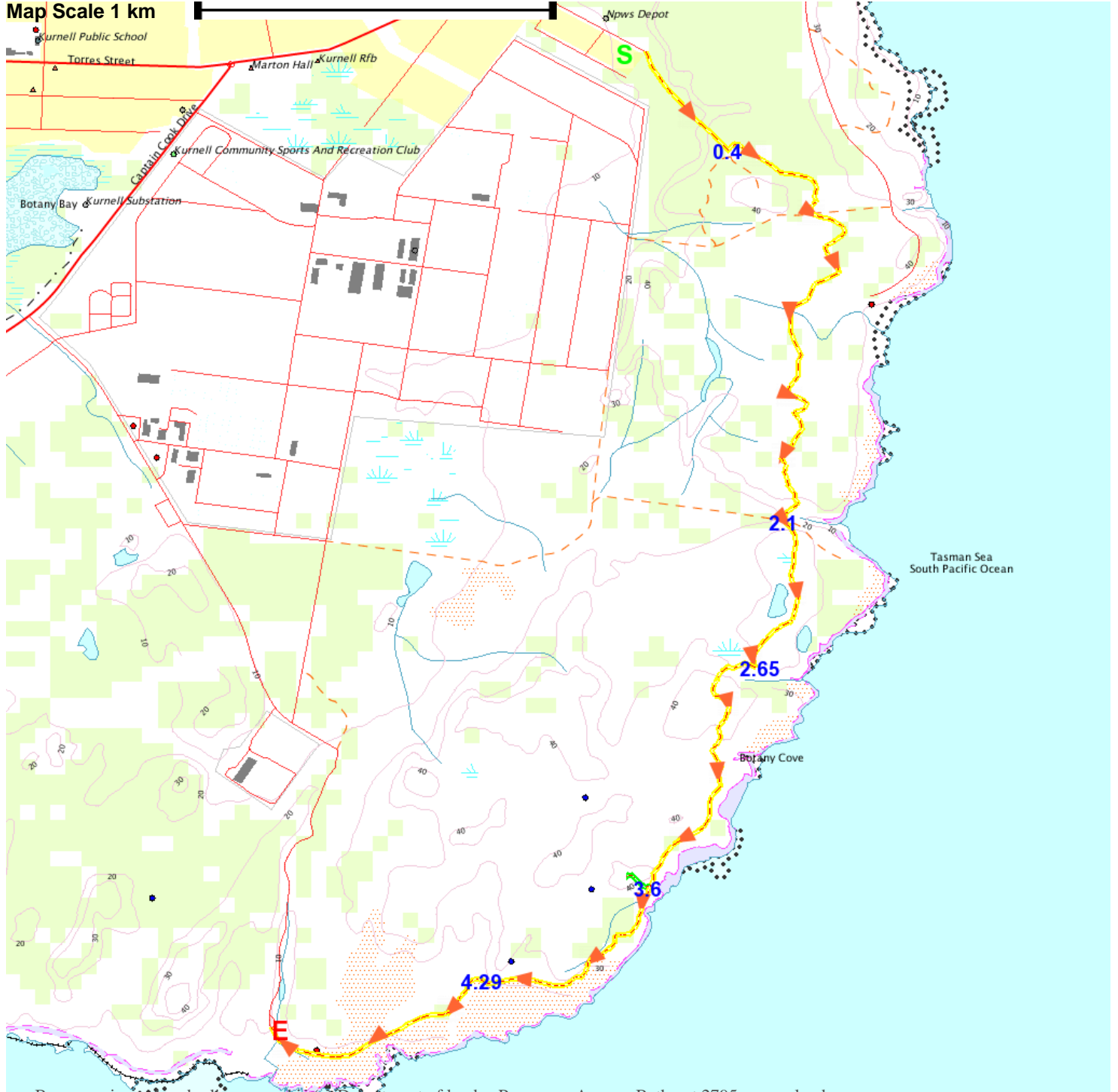


**A list of paper topographical maps that cover this walk**  
[Port Hacking 1:25 000 Map Series](#)  
[Port Hacking 1:100 000 Map Series](#)



**Nearby outdoor and camping stores**  
**Kingsford Camping & Disposals** 309 Anzac Pde Kingsford (02) 9663 3535  
**Boots Great Outdoors** 23 Koonya Cct Caringbah (02) 9542 8988  
**Caravan Accessories Pty Ltd** 33 Rocky Point Rd Kogarah (02) 9588 3400  
**Carlton Canvas Co** 337 Princes Hwy Carlton (02) 9587 0208  
**Brandt Bros Est 1878** 141 Devonshire St Surry Hills (02) 9318 2666





Base map is used under licence and is (c) Department of lands Panorama Avenue Bathurst 2795 www.lands.nsw.gov.au

